

# O•7 'Most Done Ling'rin' Here

INSTRUMENTATION															
AG/SM	□	□	E	□	□	□	□	□	□	E	□	□	□	□	finger cymbals
BM/AM	□	□	E	□	□	□	B	□	□	□	□	□	□	□	

## FORM

Introduction: One phrase of accompaniment pattern  
 Song: Voices with *tutti* instruments  
 Interlude: Improvised melody (vocal or instrumental)  
 Song: Voices with *tutti* instruments

## NOTEWORTHY

Tonality: minor (tonal center)  
 Rhythm: half, quarter, eighth notes, quarter and eighth rests  
 Pitch: *so, la, do re mi*

## TEACHING THE ORCHESTRATION

### 1. Teach the bass/alto metallophone parts.

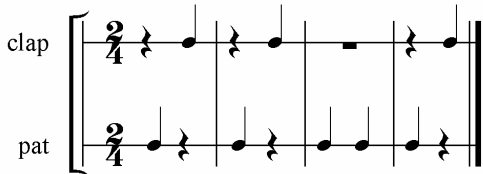
Have students:

- Echo you, saying:



I am go - in' far a - way now.

- Mirror you as you transfer the speech pattern to body percussion as shown below:

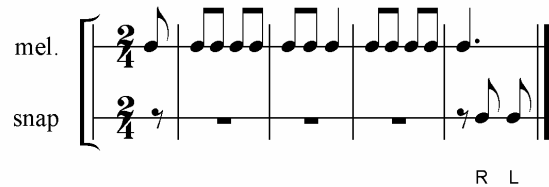


- Transfer the patting to E and B on BM and the clapping to E and B on the AM
- Sing the song and play the BM and AM parts.

### 2. Teach the soprano metallophone/alto glockenspiel part.

Have students:

- Sing the song with the BM/AM accompaniment and mirror you as you snap following the word *here* at the end of each four-measure phrase. (NOTE: Direction is shown here from the teacher's perspective.)



- Transfer the snaps to low and high E on AG and SM.
- Sing the song with the parts learned so far.

### 3. Teach the finger cymbals part.

Have students:

- Sing the song with other accompanying instruments, mirroring you as you snap your fingers at the beginning of the first and third measures of each phrase.
- Transfer the snapping to finger cymbals.

### 4. Sing the complete song with instrumental accompaniment.

## OPPORTUNITY FOR CREATIVITY

Have students:

- Sing pitch syllable names as you point to pitches on this scale shown on the board:



- Clap the following rhythm from the board:



- Divide into four groups with each group using the given rhythm to create its own melodic phrase, either vocally on the syllable /oo, or on pitched instruments. Their improvisations should start and end on E.
- Use the improvised phrases as an interlude for the song.