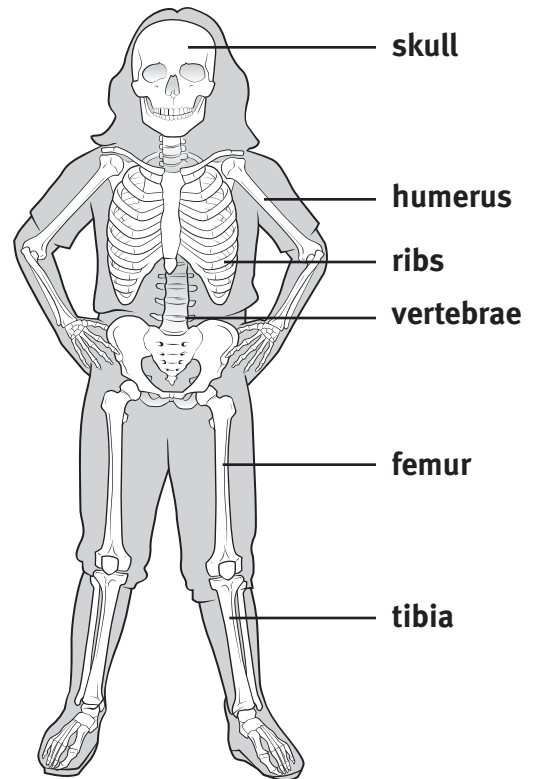


Bones and Muscles

Directions: Your bones and muscles work together when your body moves. Bands of tissue called tendons attach muscles and bones together. When you move, your muscles pull your bones by the tendons. Use the diagram to answer the questions on the lines provided.



- Where in the body are these bones found?
 - femur _____
 - humerus _____
 - skull _____
 - vertebrae _____

- What job do the muscles shown probably do?

- Are the muscles shown voluntary or involuntary? How do you know?

- What kind of movement does your calf muscle make? (Hint: Try out your calf muscle.)

- Which bones do you think the calf muscles are attached to?

